

# Charging Motor Installation manual

Low & Medium Voltage Circuit Breaker

Sep. 20. 2022

# Draw out body

Essential for Today  
Potential for Tomorrow

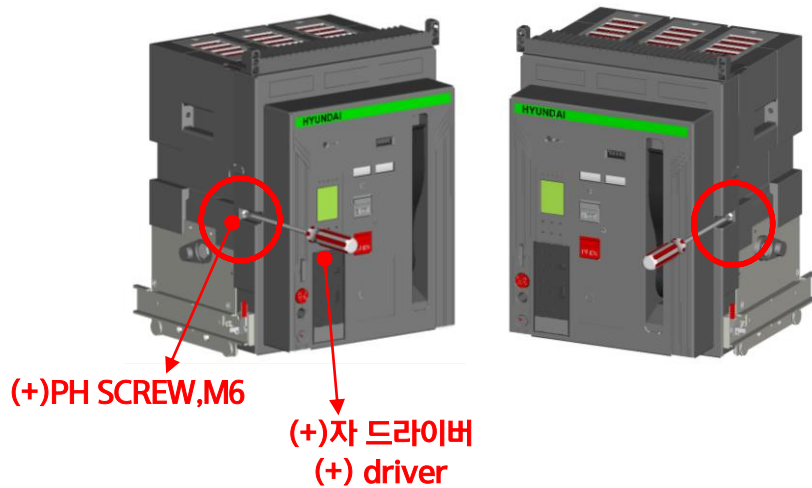


#1.  
Draw out body of ACB from the cradle.

크래들에서 본체를 꺼내주세요.

# Open front cover

Essential for Today  
Potential for Tomorrow

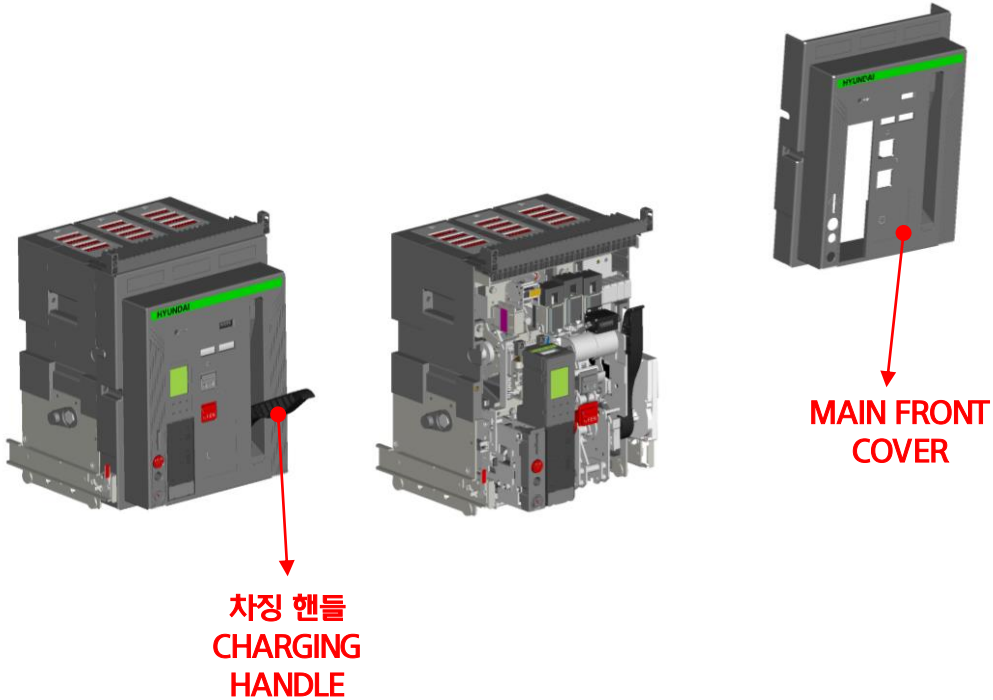


#2.  
Loosen both bolts by using (+) driver.

커버 볼트(2개)를 풀어주세요.

# Open front cover

Essential for Today  
Potential for Tomorrow



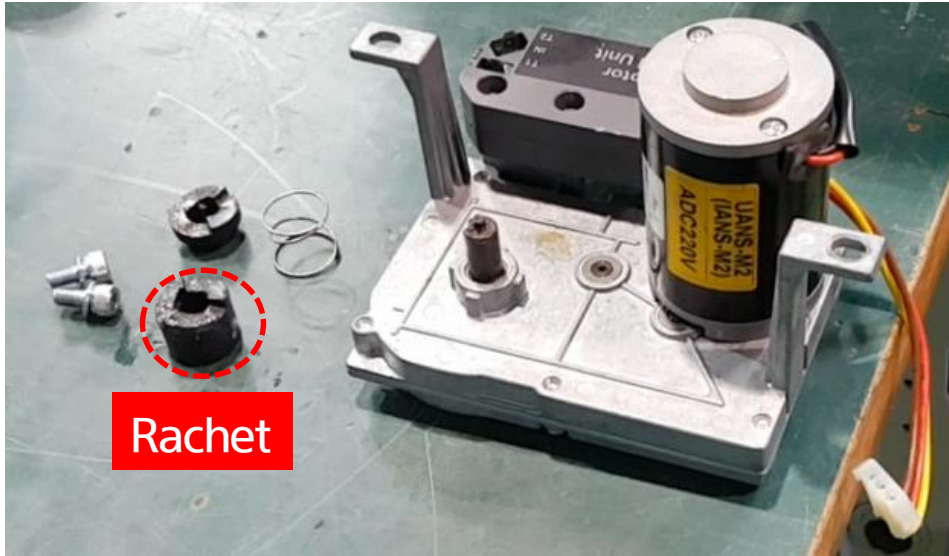
#3.  
Let down the charging handle and  
disassemble main front cover.

커버를 분리해 주세요.



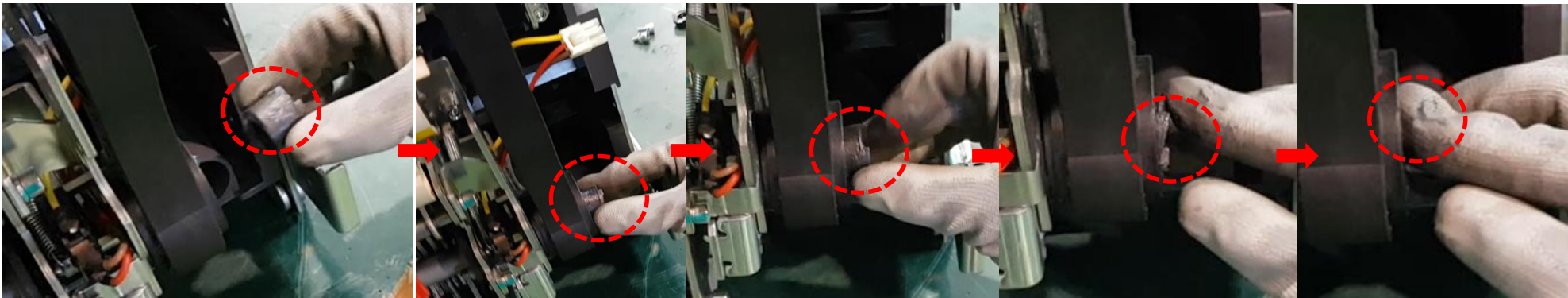
# Install Ratchet

Essential for Today  
Potential for Tomorrow



#4. Insert the large ratchet in the motor unit into the right side of the handle. Please put the gear on the right side.

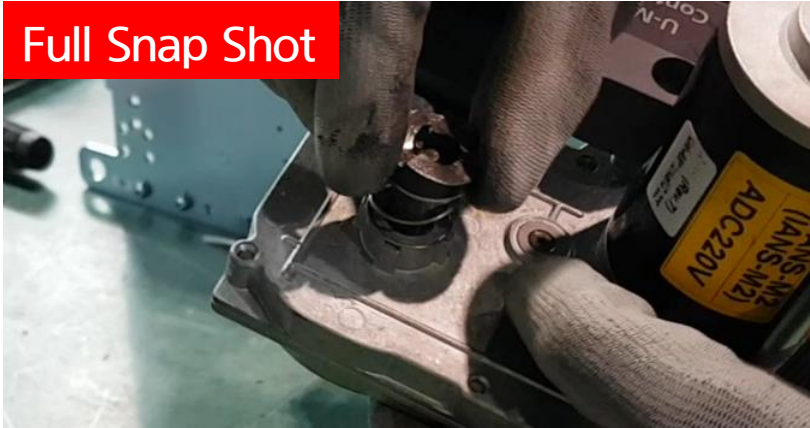
모터unit 에 들어 있는 커다란 Ratchet 을 핸들 우측에 끼워 주세요. 기어 쪽을 우측으로 해서 끼워 주세요



# Remove Bolts

Essential for Today  
Potential for Tomorrow

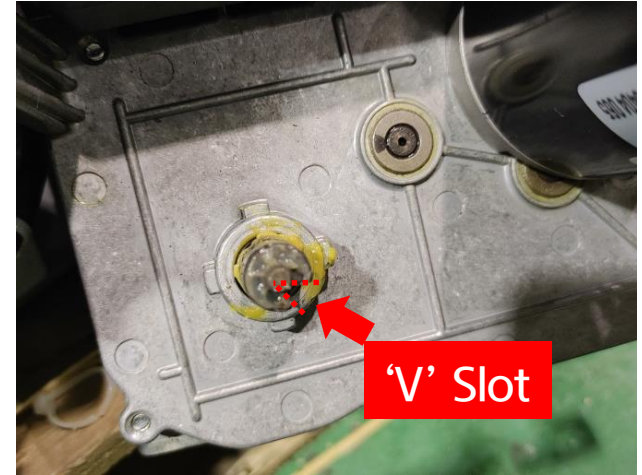
Full Snap Shot



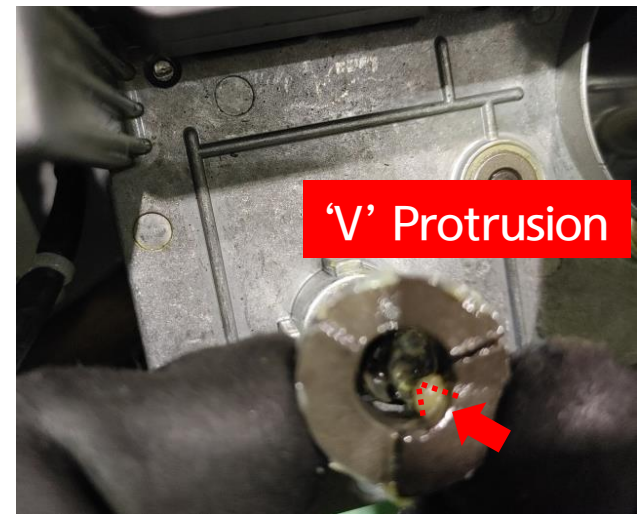
#5.  
Put the spring and small ratchet in the motor unit. Raise it with the gear facing up. Place the ratchet in the slot.

모터unit 에 스프링과 작은 Ratchet을 넣어주세요. 기어쪽을 위쪽으로 향하게 해서 올려주세요. 슬롯에 맞추어 Ratchet 을 넣어 주세요

Reference  
Picture  
When  
Installing  
Ratchet  
라쳇 설치  
참고 사진



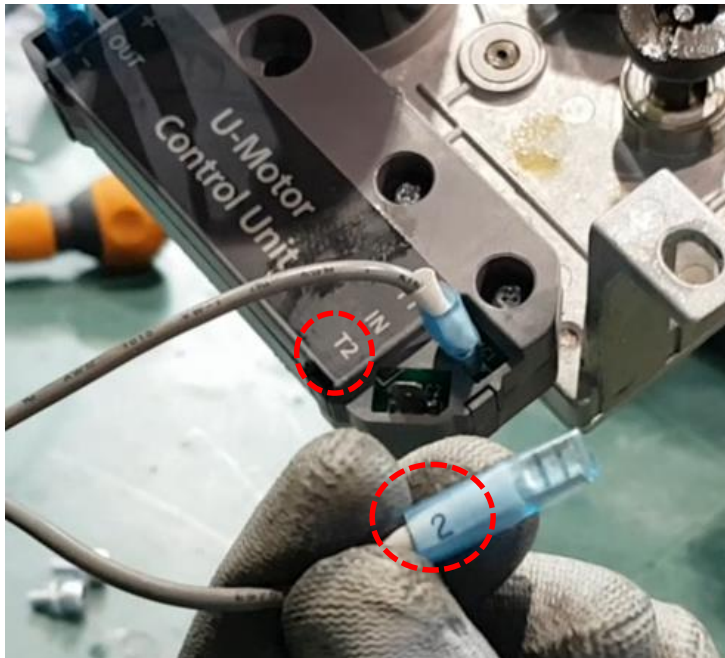
'V' Slot



'V' Protrusion

# Cable#1 Connection

Essential for Today  
Potential for Tomorrow

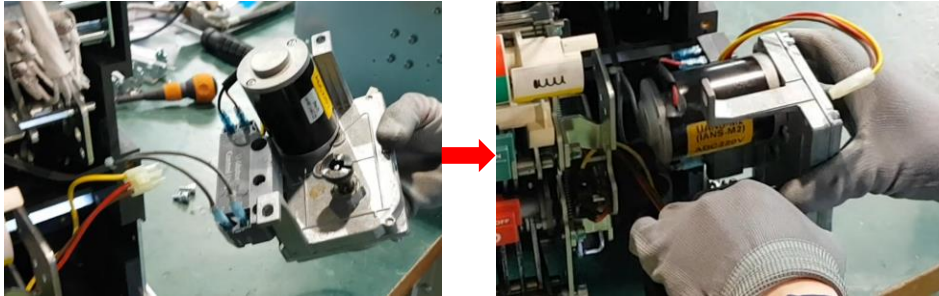


#6.  
Connect 1 to T1 and 2 to T2  
according to the number of  
cables covered by the blue tube  
on the body.

본체에 있는 파란색 튜브로 씌워져 있  
는 케이블을 숫자에 맞추어 1은 T1에 2  
는 T2 에 연결해주세요

# Connect To ACB Body

Essential for Today  
Potential for Tomorrow



Reference Picture  
When Insert Ratchet  
라쳇 설치 참고 사진



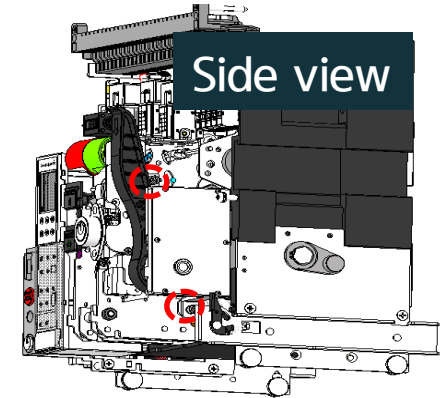
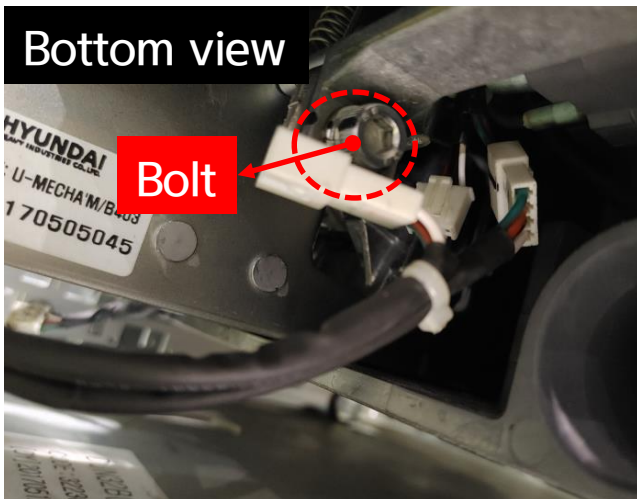
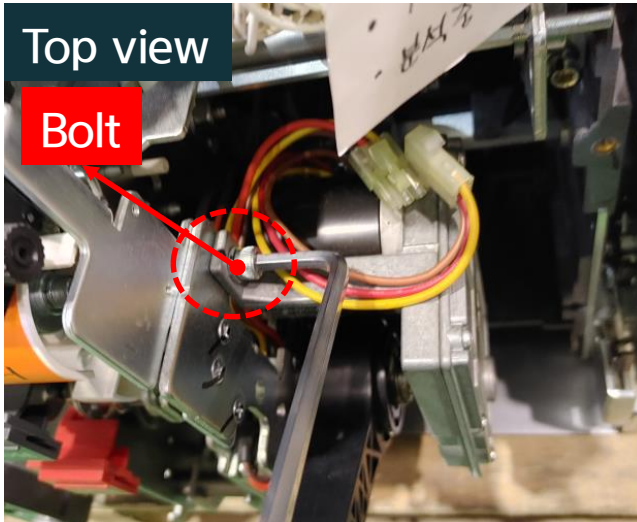
**#7.**  
Please check direction of the  
motor ratchet and insert it into  
the handle.

모터 Ratchet 방향을 숙지후 핸들에 끼  
워 주세요.



# Tightening Bolts

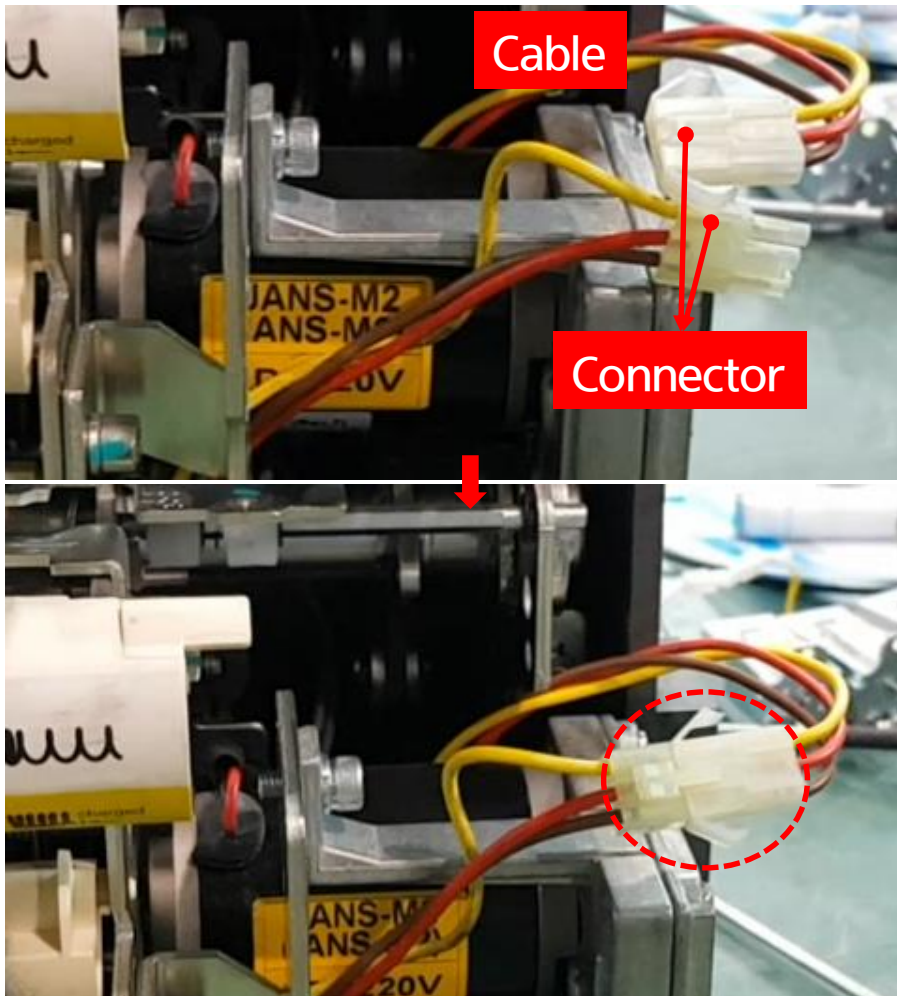
Essential for Today  
Potential for Tomorrow



#8.  
Tight the 2 bolts to the motor unit.  
Please refer to the location.  
\*5mm T-wrench

모터unit 에 붙어 있는 볼트 2개를 조여 주세요  
\*5mm T-렌치

# Cable#2 Connection

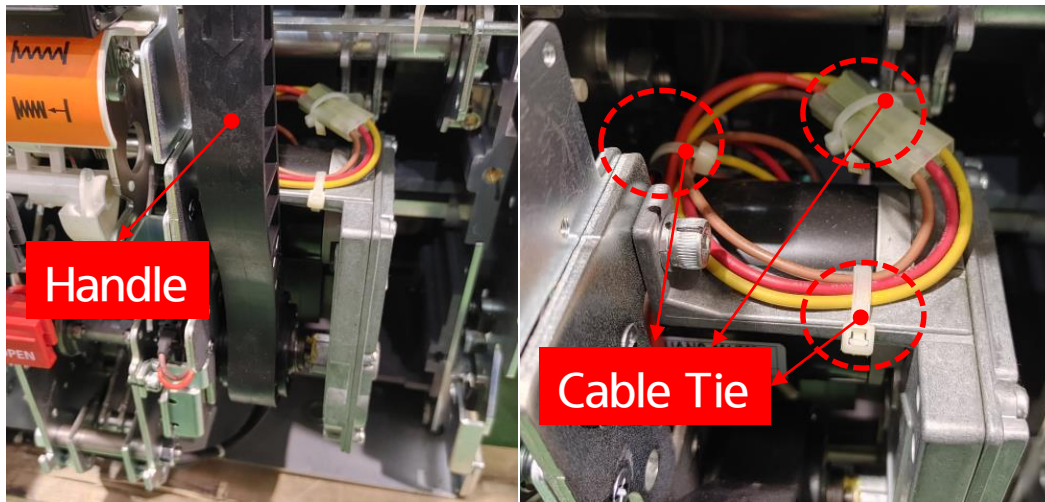


#9.  
Connect the connector on the main body to the motor connector. You can match the colors.

본체쪽 커넥터와 모터 커넥터를 연결합니다. 색깔을 맞추어 끼우시면 됩니다.

# Tie Cable

Essential for Today  
Potential for Tomorrow



#10.  
Group the cable with the cable tie.

케이블 타이로 케이블 정리를 합니다.