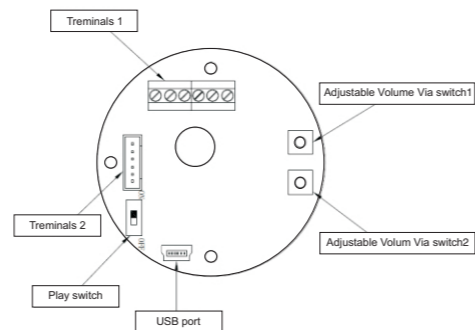


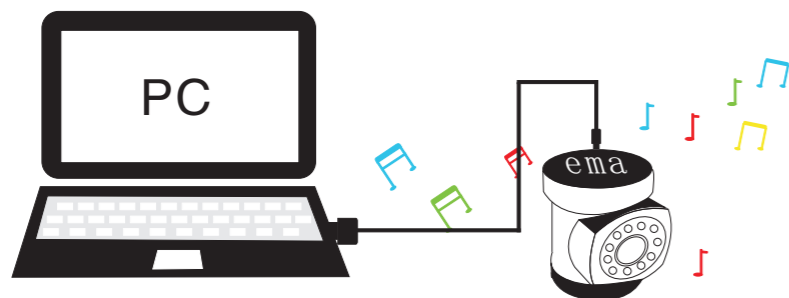
Φ 70mm Music Buzzer

**NEW**



You can input any voice into ema music buzzer as you wish! No matter it is human voice, pop music, tone , melody, natural sound or even symphony. What is more, who software is needed to DIY this audible device. Music buzzer could be used for much more condition for example the warning in different condition/area/equipments. Furthermore, the user can choose any melody or voice as an alarm to play under any failure circumstance. Each light tower module has sound and muffler features. You can flexibly adjust the position and create various combinations of light module and alarm. No other buzzer makes DIY the songs this much fun.

Incredible audible device – the volume of 70mm ema Music Buzzer is up to  $85 \pm 10$ dB/M. A variety of music can make the alarm highly recognizable compared to the general tone which commonly use in most industrial environment. In brief, ema Music Buzzer provide the user the quick response for the failure when there is a personally music coming out in the air. What is more, it is easy and flexible to be assembled in any layer of light tower, either in the top or button or in the middle of light tower. The volume of the buzzer sound can be adjusted through the DIP switches. The product is flexible and feature with wide range of 12 ~ 24VDC voltage which is perfectly save your inventory. That is no need to worry about different voltage if you haveema Music Buzzer. The function about the ema Music buzzer is a great hit. The accessory 1.5 meter USB cable is available. (Order no.: UP0007)

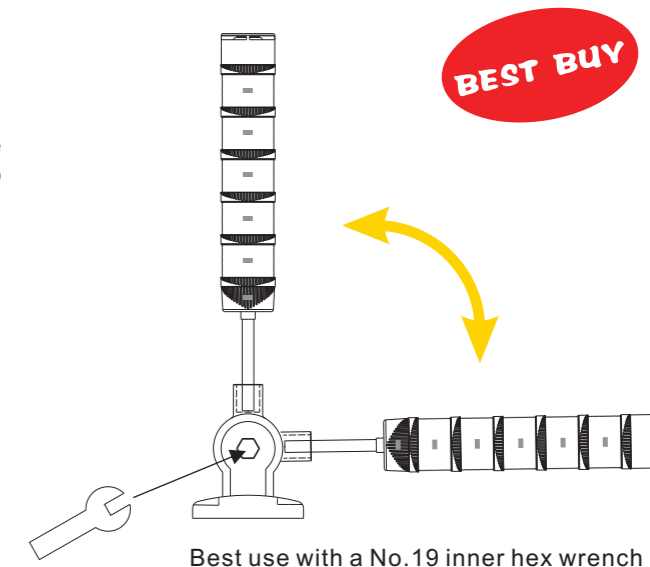


Application examples:

1. Different area in factory (such as area A and area B)
2. Different type/function equipments
3. Different malfunctions
4. Different language for different countries

Best Choice: R type bracket

ema R type bracket is designed to provide the convenience for machine delivery and to avoid the damage during the shipping.



How to select the modular light tower

①select the buzzer(optional)

+

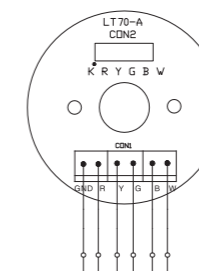
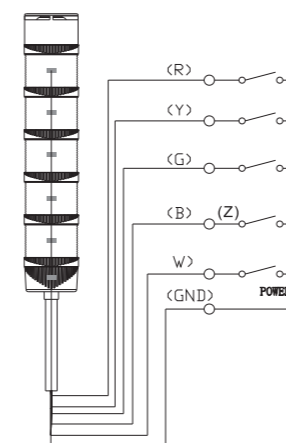
②select the light module

+

③select the bracket



Wiring instruction



input voltage connect with GND(black wire) and W(white wire) buzzer2(Continuous)  
 input voltage connect with GND(black wire) and B(blue wire) buzzer2(Intermittent)  
 input voltage connect with GND(black wire) and G(green wire)Green module light on  
 input voltage connect with GND(black wire) and Y(yellow wire) Yellow module light on  
 input voltage connect with GND(black wire) and R(red wire) Red module light on

PLC can be connected with anode or cathode

Notice:When you use the PLC to control continuous light(DC 12~24V and AC85~275V), it is ideal method to use RELAY to protect PLC .